

TOTO

TOTO U.S.A., Inc. 1155 Southern Road Morrow, GA 30260
Phone : (770) 282-8686

Warranty Registration and Inquiry
For product warranty registration, TOTO U.S.A. Inc. recommends On-Line Warranty Registration. Please visit our web site <http://www.totousa.com>. If you have questions regarding warranty policy or coverage, please contact TOTO U.S.A. Inc., Customer Service Department, 1155 Southern Road, Morrow, GA 30260 (888) 295 - 8134 or (678) 466 - 1300 when calling from outside of U.S.A.

- You are advised to record the following information to allow quick service.

Date of purchase :	Name of shop :
Date : year month day	Tel : ()



www.toto-msk.ru

+7 (926) 001-10-03

service_toto@mail.ru

TOTO

NEOREST LS

Уход

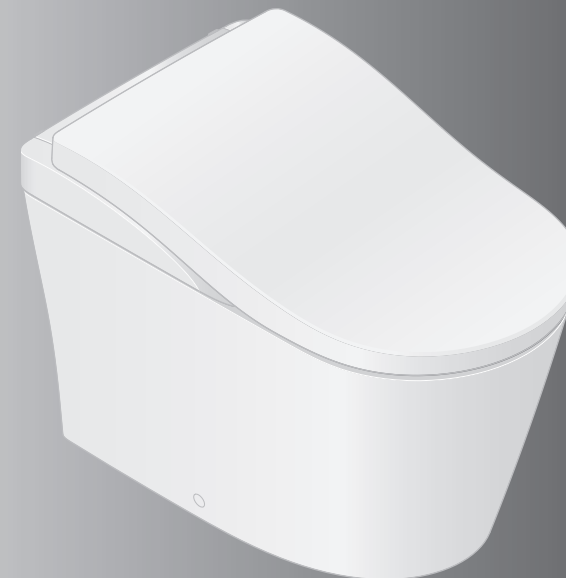
Уход за TOTO LS

If the water does not flow due to a power outage. (→Page 56)



NEOREST

SN8732M (MS8732CUMFG)



Благодарим вас за покупку данного изделия. Пожалуйста, ознакомьтесь с прилагаемой информацией, чтобы обеспечить безопасное использование изделия. Обязательно прочитайте данное руководство по эксплуатации перед использованием изделия и храните его в надежном месте для дальнейшего использования.

Уход за TOTO LS

Before Maintenance

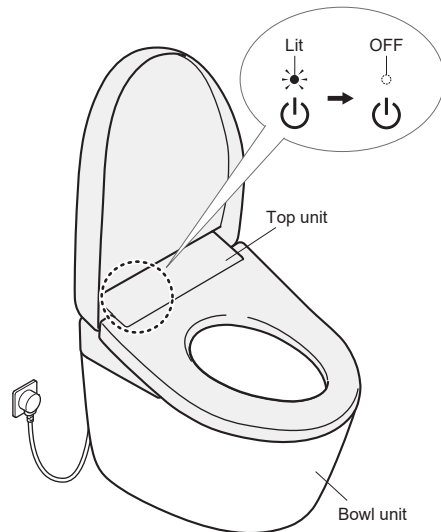
⚠ WARNING

Always turn off the power before maintenance or inspection.

Failure to do so may cause electric shock or malfunction, resulting in a breakdown.

For safety, turn the power OFF before maintenance.*1*2

When the power is turned OFF, the Power LED is unilluminated.



To turn the power "OFF"

Unplug the power plug.

To turn the power "ON"

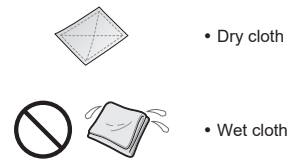
Insert the power plug.

▶ The "Power" LED illuminates.

*1 Except when using "Wand cleaning", "Bowl unit cleaning" and "Manual spray"

*2 The toilet lid does not open automatically for about 20 seconds after the power is turned ON (preparing). Operate with the remote control.

Power Plug



Approximately once a month

1. Unplug the power plug and wipe it with a dry cloth.



2. Insert the power plug.

▶ The "Power" LED illuminates.

⚠ WARNING

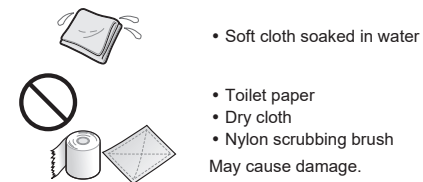
Periodically remove dust from the blades and other parts of the power plug.
Unplug the power plug and wipe it with a dry cloth.

Fully insert the power plug.

When unplugging the power plug, hold the main body of the power plug.
Pulling the power cord may damage the power plug or power cord.



Top Unit



Approximately daily

1. Turn the power "OFF". (→Page 46)

2. Wipe with a soft cloth that has been soaked in water and wrung out thoroughly.

For heavy dirt

Wipe with a soft cloth soaked in diluted, pH neutral kitchen detergent, and then wipe with a soft cloth soaked in water.



• pH neutral kitchen detergent

• Paint thinner
• Benzene
• Powdered cleanser

3. Turn the power "ON". (→Page 46)

▶ The "Power" LED illuminates.

Attention

This product is an electric appliance. Be careful not to let water seep inside or leave detergent in the gap between the top unit and bowl unit.

Do not put any cleaning solution directly onto the warm air outlet or cover around the wand, etc.

May damage plastic parts or cause a malfunction.

When using a toilet cleaner to clean the toilet, rinse it off within 3 minutes and leave the toilet seat and toilet lid open.

Wipe off any cleaner that remains on the bowl unit. If vapor from a toilet cleaner enters the top unit, it may cause a malfunction.

<If "Auto flush lid closed" (→Pages 30, 31) is turned ON> (→Page 10)

Do not press or pull the warm air outlet or cover around the wand with excessive force.

Doing so may cause damage or failure.

Wipe the back surface of the toilet seat and the toilet seat cushions with a soft cloth tightly wrung out with water.

Otherwise adhesion of dirt may result in discoloration.

Be sure to wipe off any water droplets on the toilet seat.
Otherwise, the seat sensor may malfunction.

Уход за TOTO LS

Bowl Unit



- Cleaning sponge
- Brush
- Neutral toilet detergent



- Strongly acidic cleaners or strong alkaline cleaners
- Cleaners containing abrasive compounds
- Fluoride-based detergent (containing hydrogen fluoride or ammonium fluoride)
- Water-repelling cleaner
- Wire brush
- Abrasive nylon scrubbing brush

Approximately daily

1. Turn the power "OFF". (→Page 46)

2. Clean with a cleaning sponge or brush.

The water level in the bowl unit can be lowered to perform maintenance. Turn the power ON. (→Page 46)

<Bowl unit cleaning>

Remote control back side

How to remove the remote control (→Page 14)

- 1) Press the "Menu, Return" button.
- 2) Use the "SELECT keys" to select [MANUAL CLEANING].
 Press the "Enter" button.

- 3) Use the "SELECT keys" to select [BOWL CLEANING ON/OFF].

 Press the "Enter" button.
 - The water in the bowl unit flows, and then drains. After that, the water level drops for about 50 seconds. Clean inside the bowl unit.
↓
 - The water in the bowl unit drains, and then returns to its original level.
 - To stop part way through.
 - Press "Stop" button on the front side of the remote control.

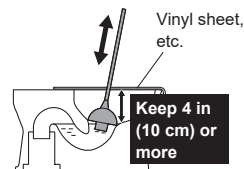
If the bowl unit is clogged

Using plunger or similar, provide 4 in (10 cm) or more clearance between the top of the bowl unit and the water surface. Use commercially available tools that are made for unclogging the bowl unit.
(May cause overflow of dirty water and water damage.)

If the floor is dirty

Clean it with a well wrung cloth. Otherwise, stains or corrosion may occur on the floor.

Note: *Sitting is recommended to reduce splashing caused by standing and urinating.*



3. Turn the power "ON". (→Page 46)

- ▶ The "Power" LED illuminates.

Attention

Be careful not to expose the top unit or the gap between it and the bowl unit to water.

Otherwise, water may overflow into the room.

Do not use any water repellent, stain-proofing cleaner or surface coating agent. These products would not damage the porcelain surface, but they may cover the porcelain surface and reduce the effect of the built-in stain prevention technology.

Manual Spray

EWATER+ mist can be sprayed to separate dirt from the surface for maintenance.

Approximately daily

<Manual spray>

Remote control back side

How to remove the remote control (→Page 14)

- 1) Press the "Menu, Return" button.
- 2) Use the "SELECT keys" to select [MANUAL CLEANING].
 Press the "Enter" button.
- 3) Use the "SELECT keys" to select [MANUAL SPRAY].
 Press the "Enter" button.

- ▶ EWATER+ mist is sprayed on the bowl unit and underneath the front of the toilet seat. Wipe off the back of the toilet seat with a soft cloth every time mist is sprayed. Then, perform maintenance on the bowl unit. (→Page 48)

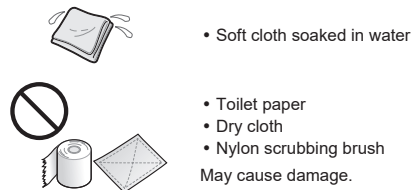
Note: *It cannot be used when the wand is out or when you are sitting on the toilet seat.*

Note: *To perform maintenance with a brush, etc. (→Page 48 "Bowl unit cleaning")*

Уход за TOTO LS

Gap between the Top Unit and Bowl Unit

You can lift up the top unit with the cleaning lift button and clean the gap between it and the bowl unit.



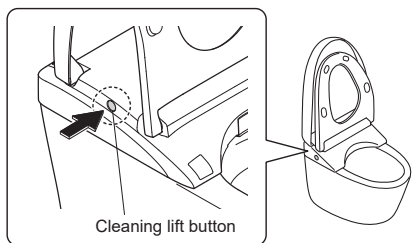
Approximately once a month

1. Turn the power "OFF". (→Page 46)

2. Open the toilet seat and lid.

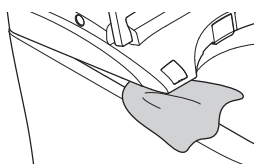
3. Press the cleaning lift button.

► This raises the front side of the top unit.



4. Clean the gap.

► Wipe with a soft cloth soaked in a diluted, neutral kitchen detergent. Then, wipe it with a soft cloth soaked in water so that no detergent remains.



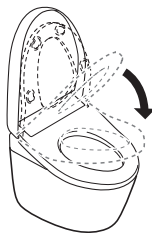
CAUTION

Do not use the product while the top unit is lifted up by the cleaning lift.
When lowering the top unit by the cleaning lift, do not insert your fingers into the gap between the top unit and the bowl unit.

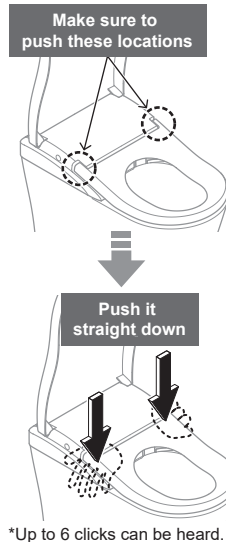
Attention

Do not directly spray cleaner and water.
Do not force the toilet seat or lid to move while the top unit is raised up.

5. Close the toilet seat.



6. Push the top unit down firmly until a click sound is no longer heard.

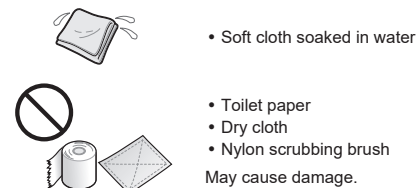


7. Turn the power "ON". (→Page 46)

► The "Power" LED illuminates.

Gap between the Top Unit and the Toilet Lid

The toilet lid can be removed for thorough cleaning.



Approximately once a month

1. Turn the power "OFF". (→Page 46)

2. Remove the toilet lid.

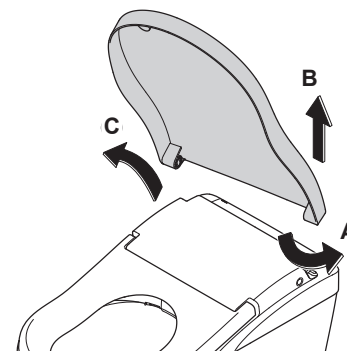
Slightly tilt the toilet lid to the front.

A Pull right side outward.

B Disconnect the hinge from the tab and pull up.

C Remove the toilet lid.

Hold with both hands



3. Wipe with a soft cloth that has been soaked in water and wrung-out thoroughly.

4. Reinstall the toilet lid.

D Align the left side pin and hinge parts.

Slightly tilt the toilet lid to the front.

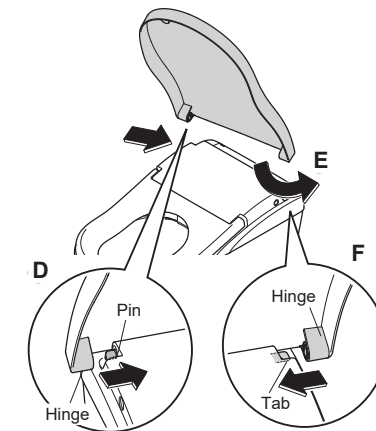
E While pulling right side outward.

F Mount by joining the hinge with the tab.

Attention

Be careful not to pinch your fingers.

Hold with both hands



5. Turn the power "ON". (→Page 46)

► The "Power" LED illuminates.

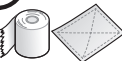
6. Open and close the toilet lid to check the reinstallation.

Уход за TOTO LS

Wand



- Soft cloth soaked in water



- Toilet paper
 - Dry cloth
 - Nylon scrubbing brush
- May cause damage.

Approximately once a month If you notice dirt (Wand cleaning)

1. Extend the wand.

To operate from the back of remote control

Remote control back side

How to remove the remote control (→Page 14)

- 1) Press the "Menu, Return" button.
- 2) Use the "SELECT keys" to select [MANUAL CLEANING].

 Press the "Enter" button.
- 3) Use the "SELECT keys" to select [WAND CLEANING ON/OFF].

 Press the "Enter" button.

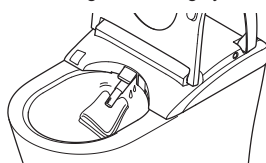
To operate from the front of remote control

Recommended if the remote control is secured to prevent theft, etc.

- 1) Press "Stop" button for about 10 seconds or longer.
- 2) Press "Front washing" button for about 3 seconds or longer.

- ▶ The wand extends and water sprays out for cleaning.
- ▶ The wand automatically retracts after about 5 minutes.

2. Wipe with a soft cloth that has been soaked in water and wrung out thoroughly.



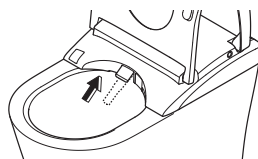
Attention

Do not pull, push or press the wand with excessive force.
May cause damage or malfunction.

- 3.

Press "Stop" button on the front side of the remote control.

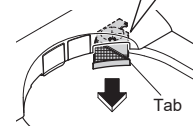
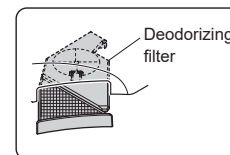
- ▶ The wand retracts.



Deodorizing Filter

Approximately once a month

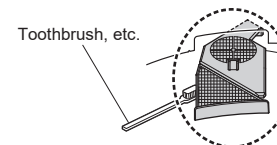
1. Turn the power "OFF". (→Page 46)
2. Hold the tab of the deodorizing filter and pull it out toward you.



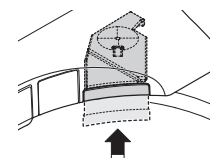
Attention

Do not pull the unit with undue force.
Doing so may cause damage or malfunction.
The deodorizing filter cannot be removed completely.

3. Clean with a tool such as a toothbrush.



4. Push in the deodorizing filter.



Push firmly until it is in the original position.

5. Turn the power "ON". (→Page 46)

- ▶ The "Power" LED illuminates.

Уход за TOTO LS

Drain Plug With Water Supply Filter

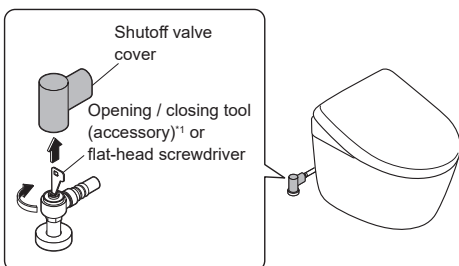
Approximately once every 6 months
If you think the water pressure has weakened

1. Remove the shutoff valve cover, and then close the shutoff valve.

► The water supply stops.

CAUTION

Do not remove the drain plug with water supply filter while the shutoff valve is open.
Otherwise, water may leak out.



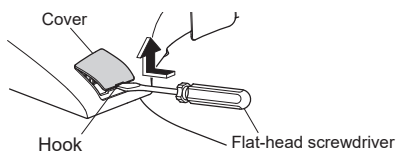
2. Press "Wand CLEAN" button.
 - Release the pressure from the water supply pipe.

3. Turn the power "OFF". (→Page 46)

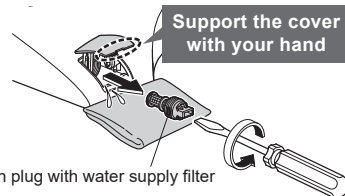
4. Open the toilet seat and lid.

5. Open the cover and remove the drain plug with water supply filter.

- 1) Insert a flat-head screwdriver in the hook of the cover to open it.



- 2) Loosen the drain plug with water supply filter with a flat-head screwdriver and then pull it.

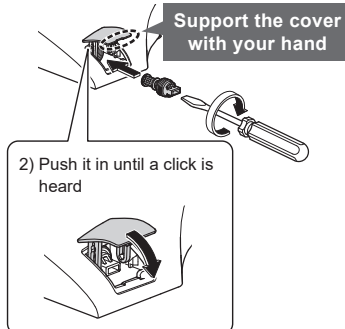


6. Clean the filter with a tool such as a toothbrush.

► Also, remove any dust from inside the hole of the drain plug with water supply filter.

7. Reinstall the drain plug with water supply filter and close the cover.

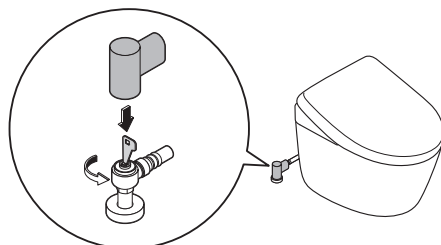
- 1) Insert the drain plug with water supply filter and use a flat-head screwdriver to tighten it securely.



8. Turn the power "ON". (→Page 46)

► The "Power" LED illuminates.

9. Open the shutoff valve, and then install the shutoff valve cover.



Water Supply Filter (Bowl Unit)

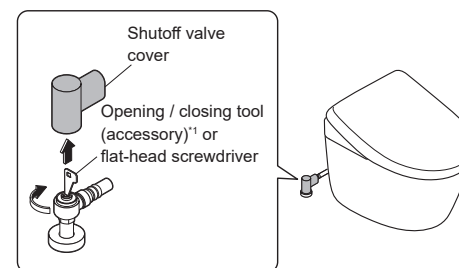
Approximately once every 6 months

1. Remove the shutoff valve cover, and then close the shutoff valve.

► The water supply stops.

CAUTION

Do not remove the water supply filter while the shutoff valve is open.
Otherwise, water may leak out.

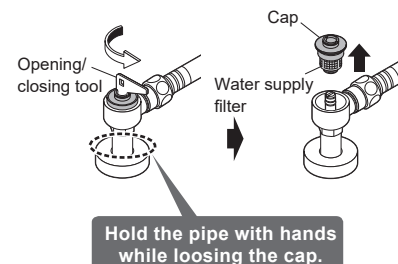


Always perform this step

2. Press the "Wand CLEAN" button.
 - Release the pressure from the water supply pipe. (Otherwise, water may leak out.)

3. Turn the power "OFF". (→Page 46)

4. Loosen the cap of the water supply filter to remove the water supply filter.



5. Remove the water supply filter from the cap and clean it with a toothbrush or similar instrument.

Attention

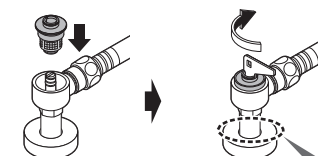
Do not use detergent.
Do not apply excessive force to the water supply filter.
Otherwise, deformation may occur.



6. Attach the water supply filter to the cap.

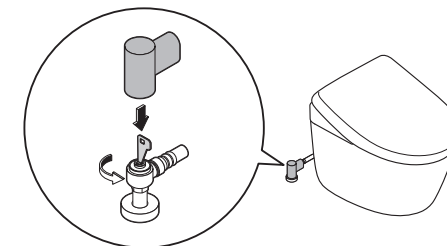


7. Install the cap of the water supply filter to the original position and tighten it with the opening/closing tool.



8. Open the shutoff valve, and then install the shutoff valve cover.

► Check that there are no leaks in the shutoff valve or plumbing connections.



9. Turn the power "ON". (→Page 46)

► The "Power" LED illuminates.

*1 Use the supplied opening/closing tool.

If the water does not flow due to a power outage (when water failure hasn't occurred)

The bowl unit can be flushed with the manual water supply cord (orange) and manual water storage cord (white).

Watch video

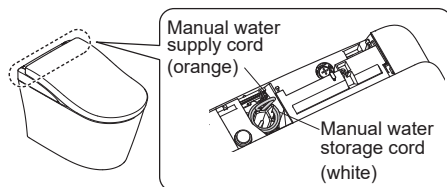
If the water does not flow due to a power outage

<https://youtube.com/playlist?list=PL8IJONSGBXLC5fHWTMZ13wVNHnjLbYvU>

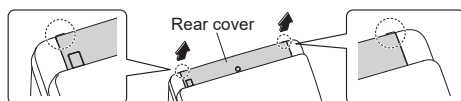


*May incur communication charges.

*You may not be able to watch the video depending on your environment.



1. Remove the rear cover.



Lift up at the location shown in the illustration and remove it.

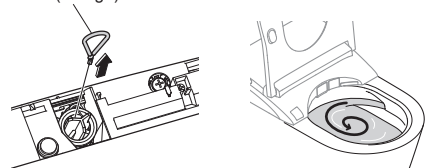
2. Open the toilet seat and lid.

3. Operate the manual water supply cord (orange) to supply water to the bowl unit.

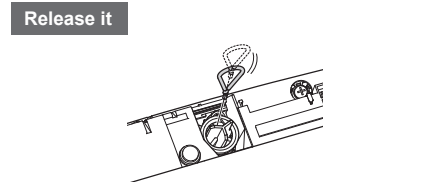
- 1) Pull the manual water supply cord (orange) to its stop position.



Manual water supply cord (orange)

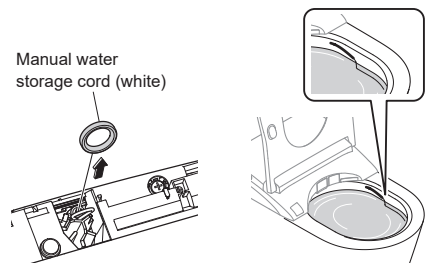


- 2) Release the manual water supply cord (orange).



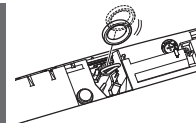
4. Operate the manual water storage cord (white) to raise the water level in the bowl unit and drain the water in the bowl unit.

- 1) Pull the manual water storage cord (white) to its stop position and hold it.



- 2) Release the manual water storage cord (white).

Release it
(The water in the bowl unit drains and the water level drops.)



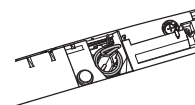
Note: Continuously pulling the manual water storage cord (white) may flood the bowl unit.

Attention

If the water in the bowl unit does not drain after releasing the manual water storage cord (white), the bowl unit may be clogged.

Pull the manual water supply cord (orange) to its stop position, release it, and fix the bowl unit. (→Page 48)
Water may overflow.

5. Place the manual water storage cord (white) back in the original position.



Always perform this step

6. When the water level in the bowl unit drops to the original level, operate the manual water supply cord (orange) to stop supplying water to the bowl unit.

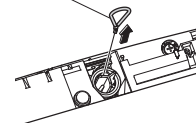
Attention

If the waste material does not flush down completely, repeat the procedure from step 3.

- 1) Pull the manual water supply cord (orange) to its stop position.

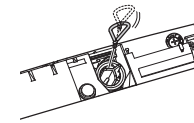
Pull it

Manual water supply cord (orange)

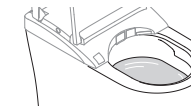


- 2) Release the manual water supply cord (orange).

Release it



Check that water has stopped being supplied to the bowl unit.

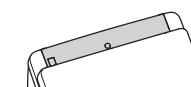
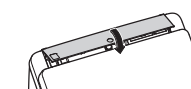
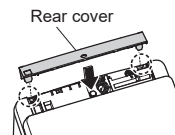


Attention

The manual water supply cord (orange) is pulled to its stop position to change whether to supply water to the bowl unit or stop it.

Be sure to pull the manual water supply cord (orange) to its stop position to stop supplying water to the bowl unit.

7. Install the rear cover.



Attention

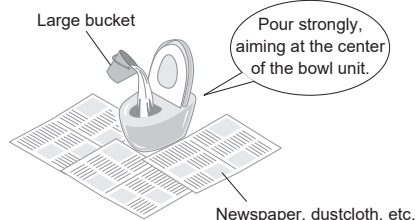
When power is restored, be sure to perform a "Flush". To prevent waste from remaining in the discharge pipe.

You can also flush the bowl unit with a bucket. (→Page 58)

What to Do?

If the water does not flow due to a water service interruption

1. Use a bucket to flush the bowl unit. (About 6–8 L)



2. If the water level is low after flushing, add more water.
(Until the water level does not rise further.)
▶ Prevents odors.

Attention

Before starting work, turn "Auto flushing" OFF.
(→Page 30)

When the water supply is restored, make sure to first use water in the bath or kitchen (not with this product) to remove air from the water supply pipes.

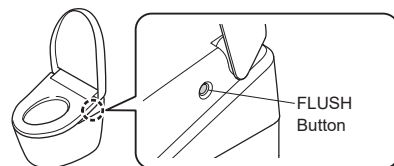
Otherwise, air or foreign objects may enter this product, causing failure.

After that, be sure to perform a full flush.

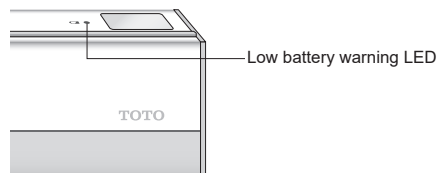
To prevent waste from remaining in the drain pipe.

If you cannot operate with the remote control

Flush is also possible using the buttons on the right side of top unit.



If the low battery warning LED is flashing, replace the batteries.



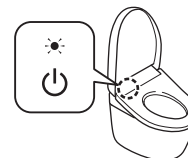
Replacing the batteries

1. Turn the power "OFF". (→Page 46)
2. Remove the remote control from the hanger.
(→Page 14)
3. Open the battery cover and replace two AA batteries.
(→Page 14)
▶ The low battery warning LED goes off.

4. Mount the remote control in the hanger.
(→Page 14)

5. Turn the power "ON". (→Page 46)

▶ The "Power" LED illuminates.



Attention

"ON" and "OFF" settings of the functions such as the energy saver function may be canceled when the batteries are replaced.
Set them again.

Freeze Damage Prevention

When the ambient temperature is likely to drop to 32 °F (0 °C) or lower, take measures to prevent freezing.

Attention

When the ambient temperature is likely to drop to 32°F (0 °C) or lower, do not use the energy saver feature. Otherwise, the product may break down.

Warm the bathroom or take measures against freezing so that the ambient temperature does not drop below 32 °F (0° C).

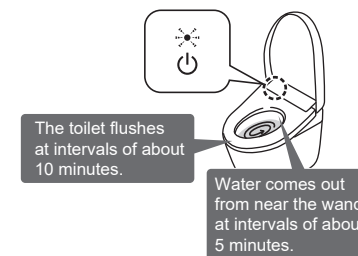
Before starting work, set "Auto flushing" (Page 30) and "Auto open / close" (Page 32) to "OFF".

How to Freeze Damage Prevention (Dynamic mode)

This function runs the water for the bowl unit and top unit automatically at a fixed interval in order to prevent freezing.

How to Set

1. Turn "Anti freezing" ON with the remote control.
(→Page 41)
▶ The "Power" LED flashes.
 - The toilet flushes at intervals of about 10 minutes.
 - About 1.69 oz (about 50 ml) of water comes out from near the wand at intervals of about 5 minutes. (The wand remains retracted.)



What to Do?

Long Periods of Disuse

If the toilet is in a location you will not visit for a long time, drain the water.

The water in the tank may cause malfunctions or become contaminated and cause skin irritation or other problems.

The water may freeze, causing damage to the product.

Attention

When there is a risk of freezing, take measures to prevent freezing. (→Page 59)

Otherwise, the product may break down.

Note: Do not drain water when the top unit is lifted up with the "Cleaning lift". (→Page 50)

How to drain the water

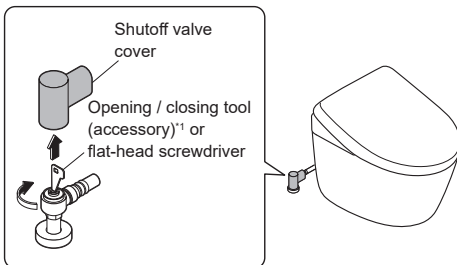
1. Remove the shutoff valve cover, and then close the shutoff valve.

▶ The water supply stops.

CAUTION

Do not remove the drain plug with water supply filter while the shutoff valve is open.

Otherwise, water may leak out.



2. Install the shutoff valve cover.

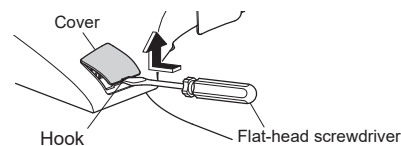


Press "Full flush" button on the remote control to drain the tank.²

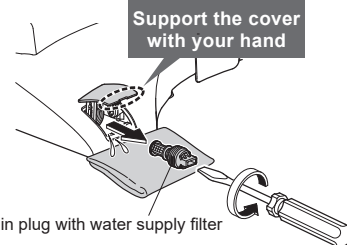
4. Press "Wand CLEAN" button.
 - Release the pressure from the water supply pipe.

5. Turn the power "OFF". (→Page 46)

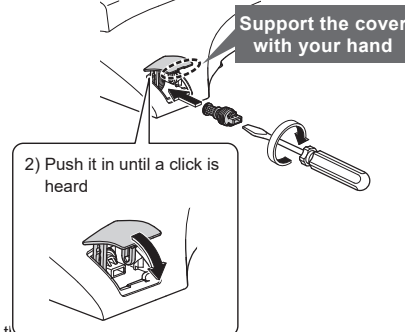
6. Drain the pipe.
 - 1) Open the toilet seat and lid.
 - 2) Insert a flat-head screwdriver in the hook of the cover to open it.



- 3) Loosen the drain plug with water supply filter with a flat-head screwdriver and then pull it.



7. Reinstall the drain plug with water supply filter and close the cover.
 - 1) Insert the drain plug with water supply filter and use a flat-head screwdriver to tighten it securely.



- 2) Push it in until a click is heard

If water may get frozen

- ▶ Add antifreeze solution to the water in the bowl to prevent freezing. (The antifreeze solution should not be flushed out. Collect it before using the toilet and dispose of it.)

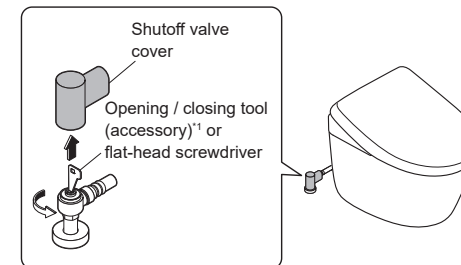
To use the product again

- ▶ The water needs to be resupplied. (→See below.)

Resupplying the Water

1. Remove the shutoff valve cover, and then open the shutoff valve.

- ▶ Check that water is not leaking from a pipe or the top unit.



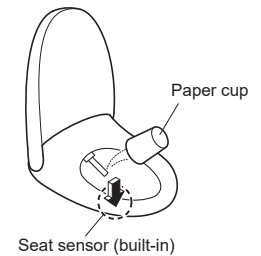
2. Install the shutoff valve cover.

3. If the power is not on, turn the power ON. (→Page 46)

- ▶ The "Power" LED illuminates.

4. Discharge water from the wand.
 - 1) Keep your hand or arm in contact with the seat sensor (for details, →refer to Page 9)
 - 2) Press "Rear washing" button to discharge water from the wand.
 - ▶ Catch the water in a paper cup or other receptacle.

- 3) Move your hand or arm from the seat sensor



5. Press "Full flush" button.²

Attention

The bowl unit cannot be flushed when there is not enough water in the tank. In this case, do not perform any operations.

- ▶ The LEDs on the main display flashes while water is being supplied to the tank, and then changes to lit when water supply is complete. It takes about 80 seconds for water supply to complete. (The required time depends on the usage conditions such as the water supply pressure.)

If the remaining water has frozen and no water comes out

- ▶ Heat the inside of the bathroom, and warm the water supply hose and shutoff valve using a cloth soaked in warm water.



6. After the bowl unit fills with water, press "Full flush" button again.²

*1 Use the supplied opening/closing tool.

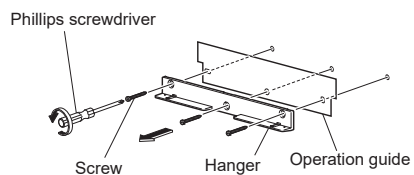
*2 If "Auto flush lid closed" is turned ON, the toilet lid closes before flushing the

What to Do?

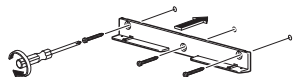
How to remove the operation guide

To remove, follow the procedure below.

1. Turn the power "OFF". (→Page 46)
2. Remove the remote control from the hanger. (→Page 14)
3. Remove the hanger and operation guide.



4. Screw the hanger on the wall.



5. Mount the remote control in the hanger. (→Page 14)

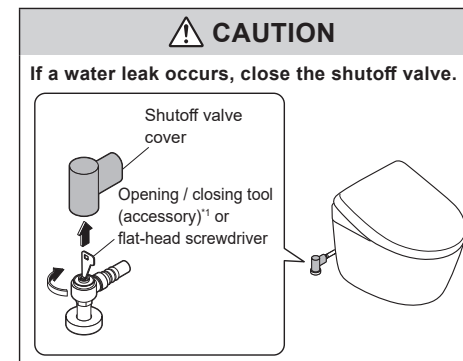
6. Turn the power "ON". (→Page 46)
 - ▶ The "Power" LED illuminates.

To install back the operation guide, follow the procedure above.

- ▶ Install the operation guide at step 4.

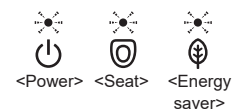
Troubleshooting

First, try the actions described on pages 63–74. If the problem persists, consult the installer, seller, or TOTO Service (→see contact information on the back cover).



In the following case, unplug the power plug and consult with TOTO customer service (→see contact information on the back cover).

"Power" LED, "Seat" LED, and "Energy saver" LED are flickering



"Seat" LED is flickering



The beep sound keeps sounding

Please check first (A–C)

A: Is the Power LED illuminated?
Is the top unit working?

Is the "Power" LED on the main display flashing?

- ▶ The "Anti freezing" is set to "ON". (→Pages 41, 59)

Is the breaker on the distribution board turned on?

- ▶ Check whether there is a power outage or the breaker has turned "OFF".

Is the "Power ON/OFF" setting "OFF"?

- ▶ Switch it to "ON" with the remote control. (→Page 15 2-2.2)

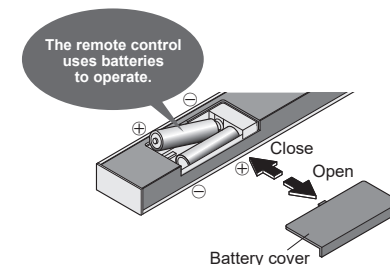
B: Is the Energy saver LED lit?

- ▶ The energy saver (→Page 28) is in operation while the LED is lit, so the toilet seat heater may be turned off.

C: Is the remote control working?

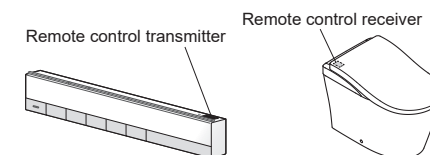
Is the low battery warning LED on the top surface of the remote control flashing?

- ▶ Replace the batteries. (→Pages 14, 59)



Is the remote control transmitter or the remote control receiver blocked?

- ▶ Remove obstructions, dirt, water droplets or any other blockages.



*1 Use the supplied opening/closing tool.